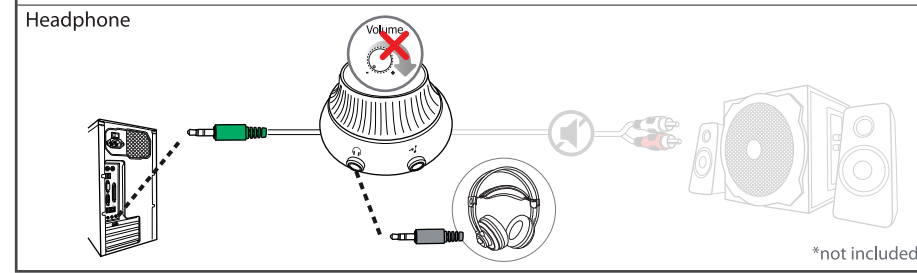
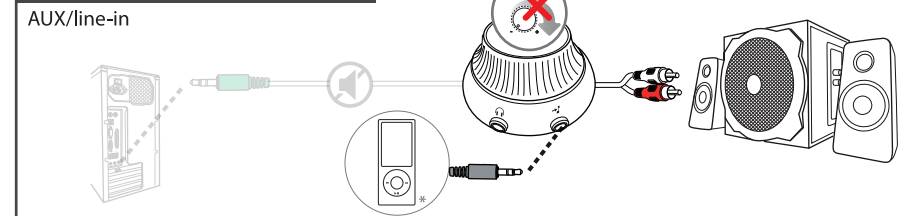
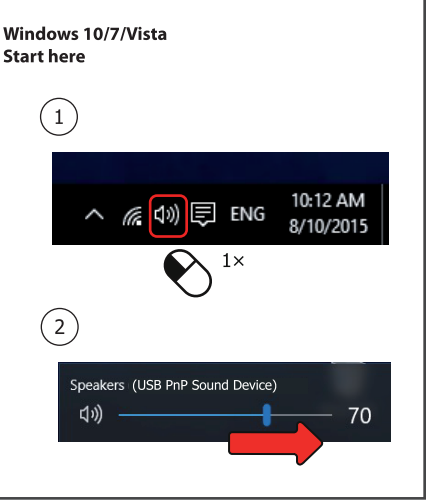
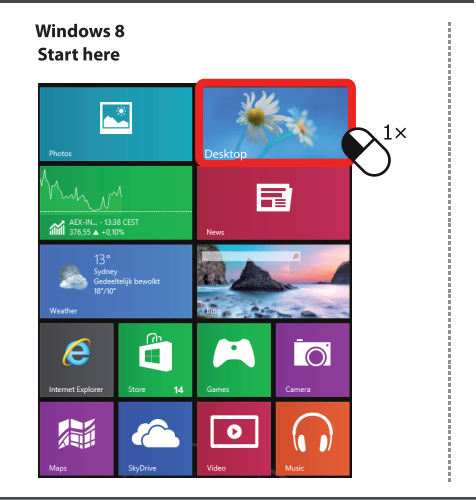


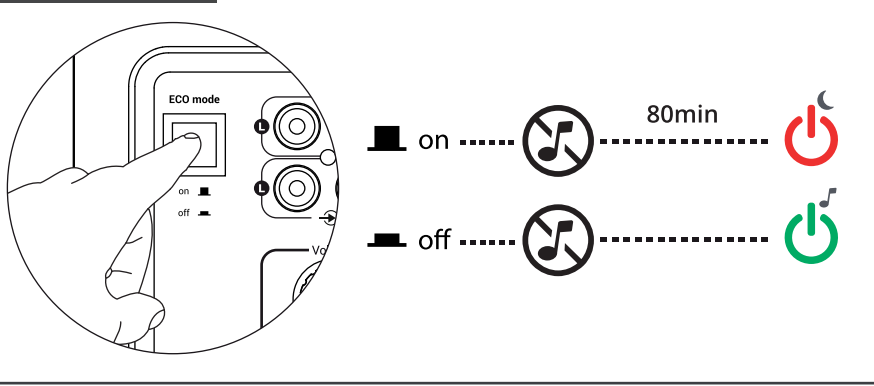
5. Other Connections



6. Installation Windows 10/8/7



7. ECO Mode



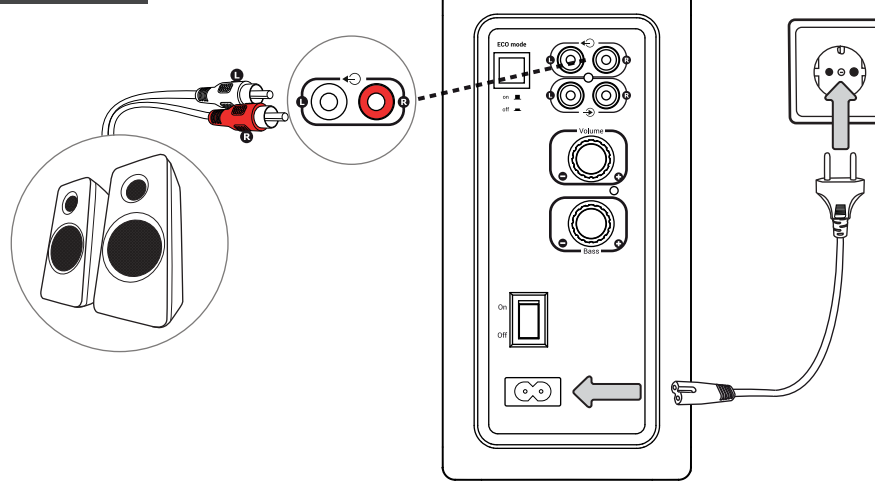
Frequently Asked Questions www.trust.com/19019/faq

© 2017 Trust International B.V. - All rights reserved - Laan van Barcelona 600 - 3317DD - Dordrecht - NL

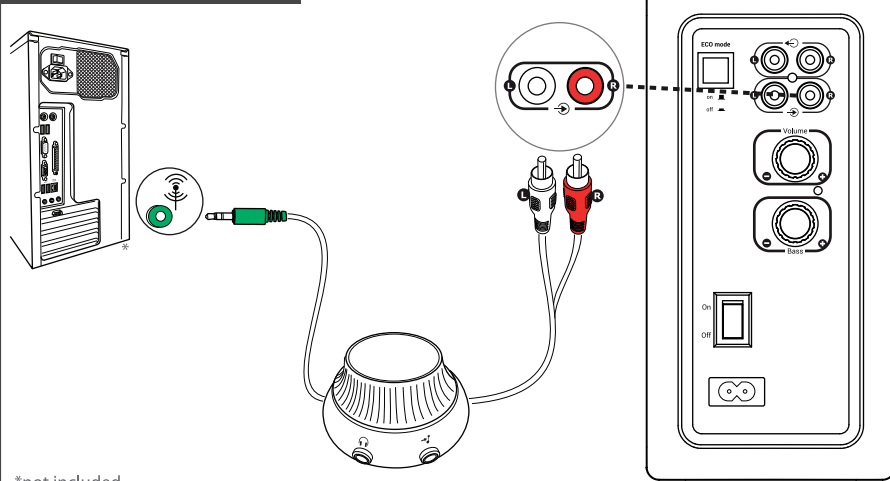
Trust
TYTAN
2.1 Speaker set



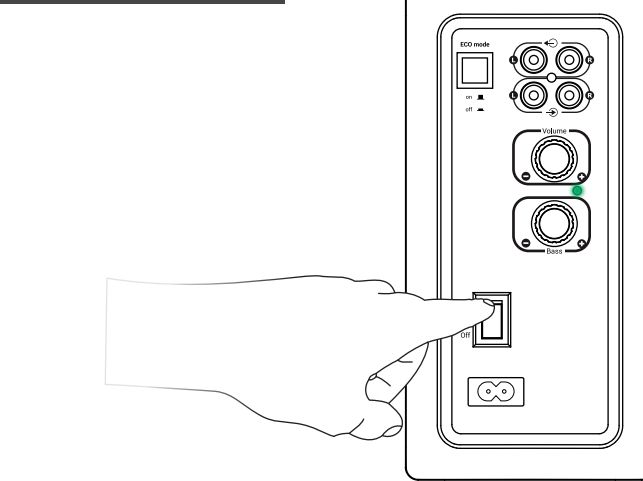
1. Setup



2. Connect Audio



3. Power On/Off



4. Volume Control

